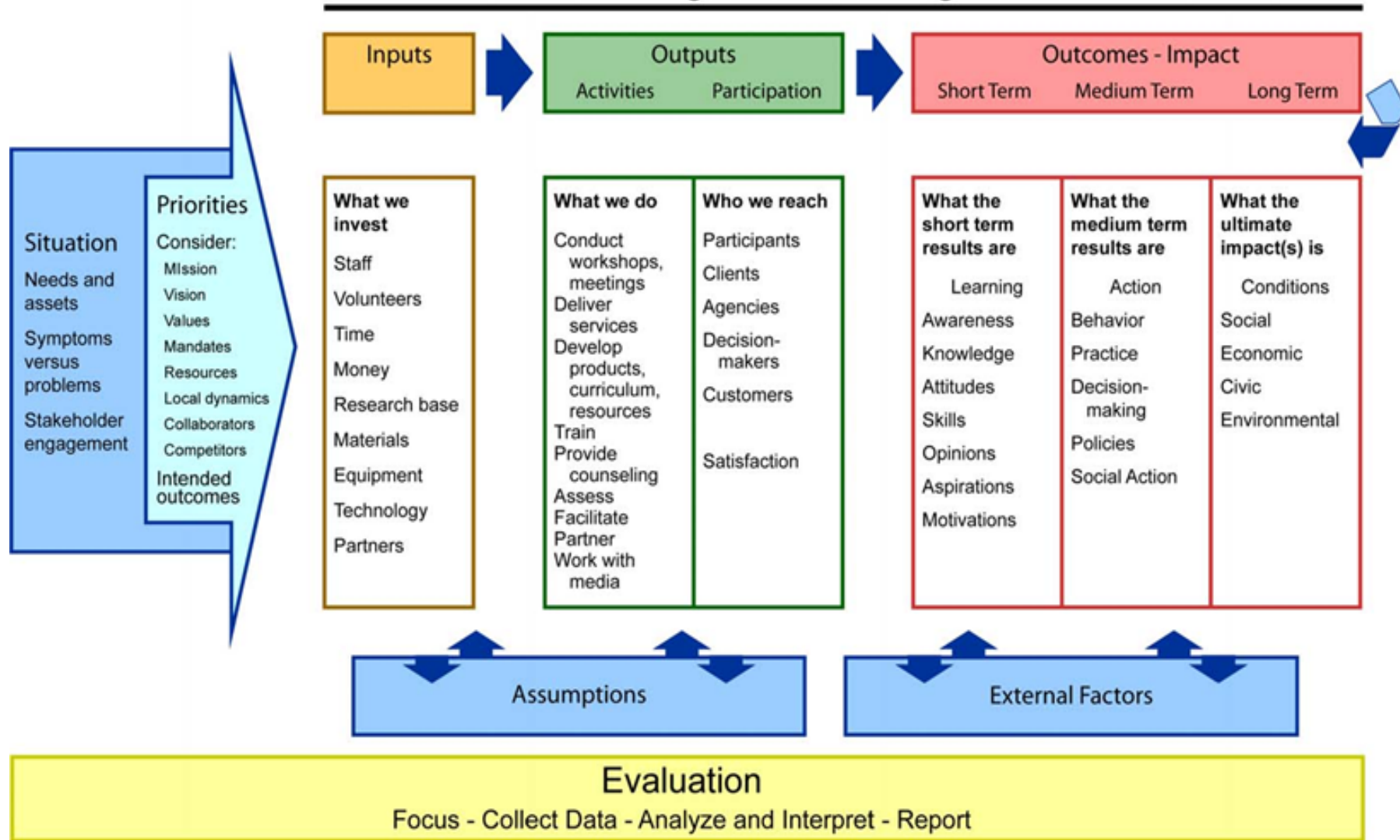
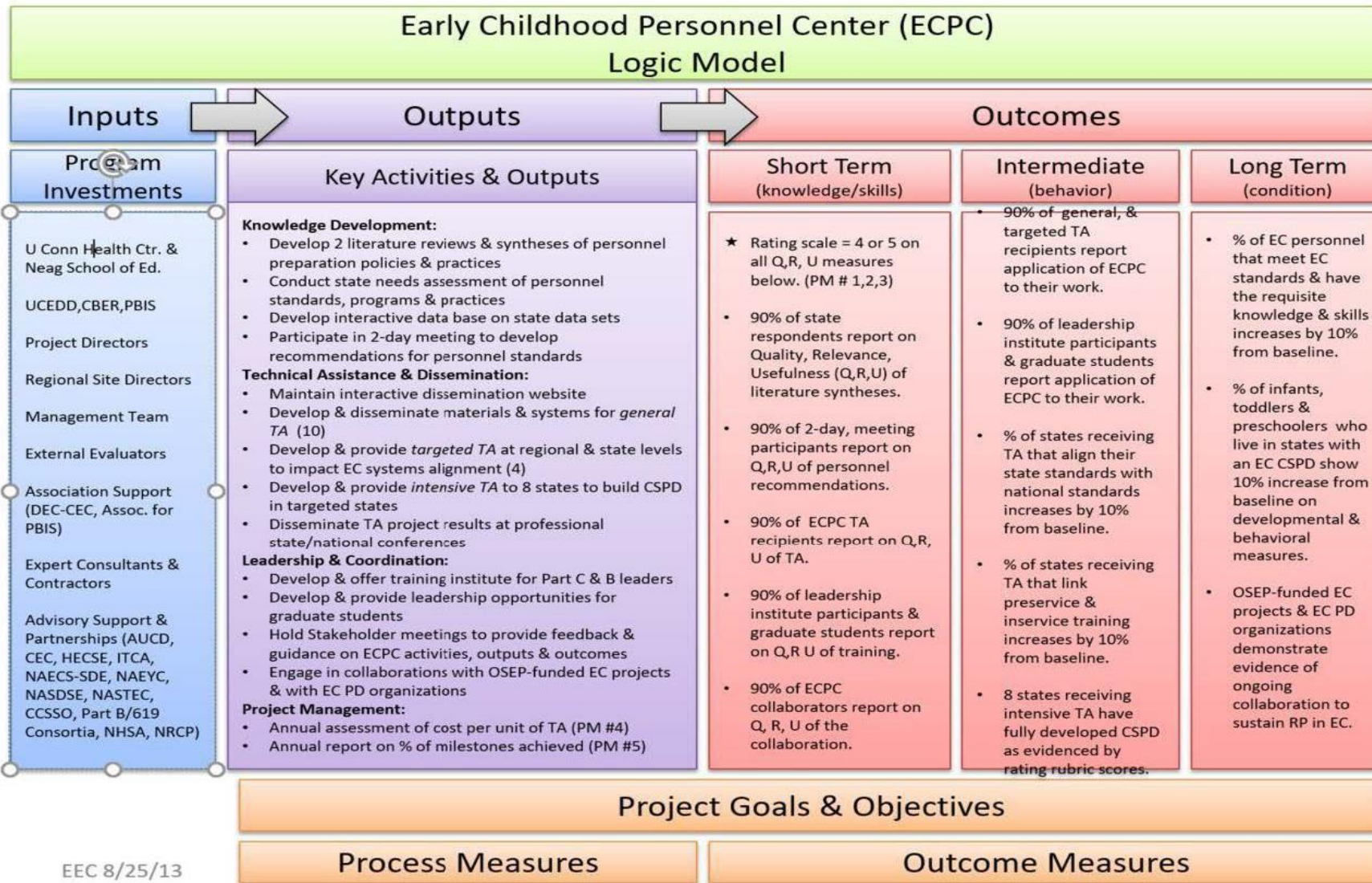


(Almost) Everything You've Always Wanted To Know About Logic Models

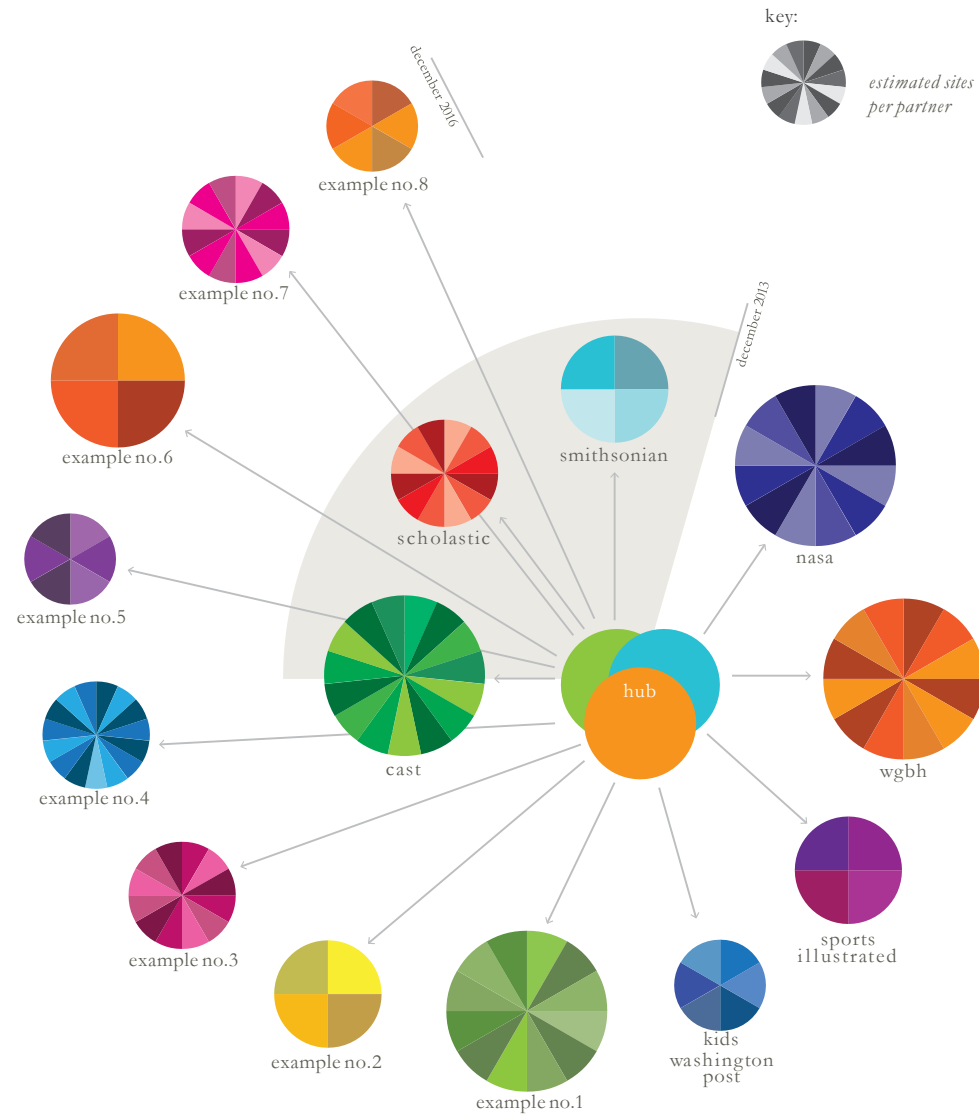
- David Merves
 - Evergreen Evaluation & Consulting, Inc.

Program Action - Logic Model

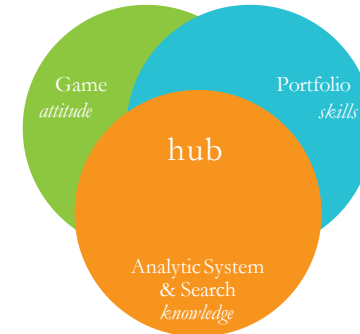




EEC 8/25/13



hub detail



Universal Literacy Network Overall Deliverables

the hub:

The Hub will provide a home base or platform on which students can explore the ULN and socially share their experiences in the ULN as their reading skills improve with motivated practice. The Hub will provide opportunities for students to monitor their progress and growth through data analytics and will be designed to explicitly support the development of metacognition about reading. To achieve these goals we envision the Hub having three parts:

A *portfolio system* whereby students collect media and textual artifacts from the ULN, and are able to curate and share those artifacts into a personal narrative representing their literacy experiences;

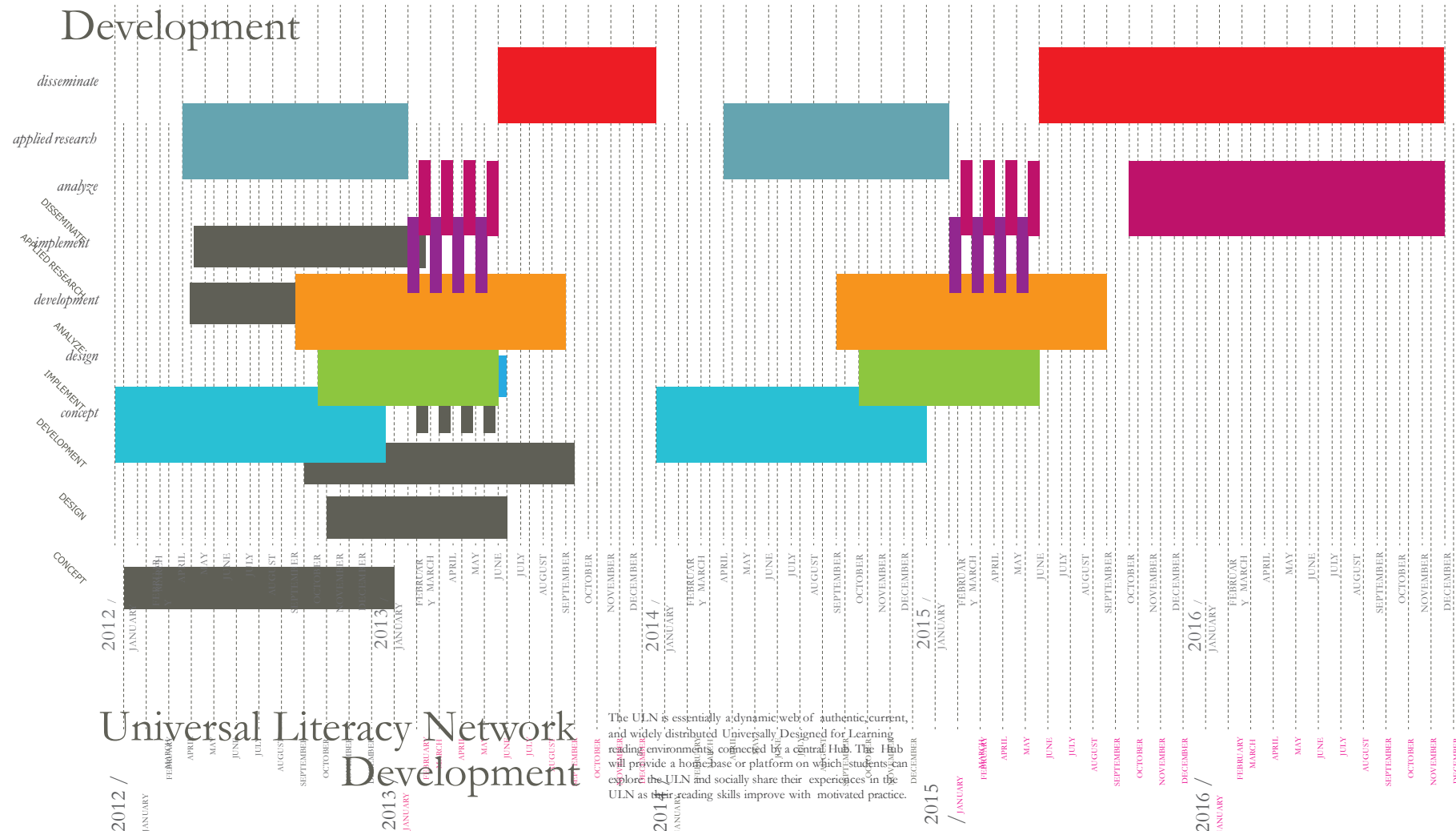
A *dashboard* and analytic system that will allow students to track their experiences in the ULN and progress toward reading goals in a quantitative, self-assessment oriented way; and,

A *game* that will provide an 'on-ramp' to reading in the ULN where students will gain an introduction to and practice with reading comprehension strategies, and potentially provide the motivational and engagement system for the ULN as a whole.

summary of design goals & principals:

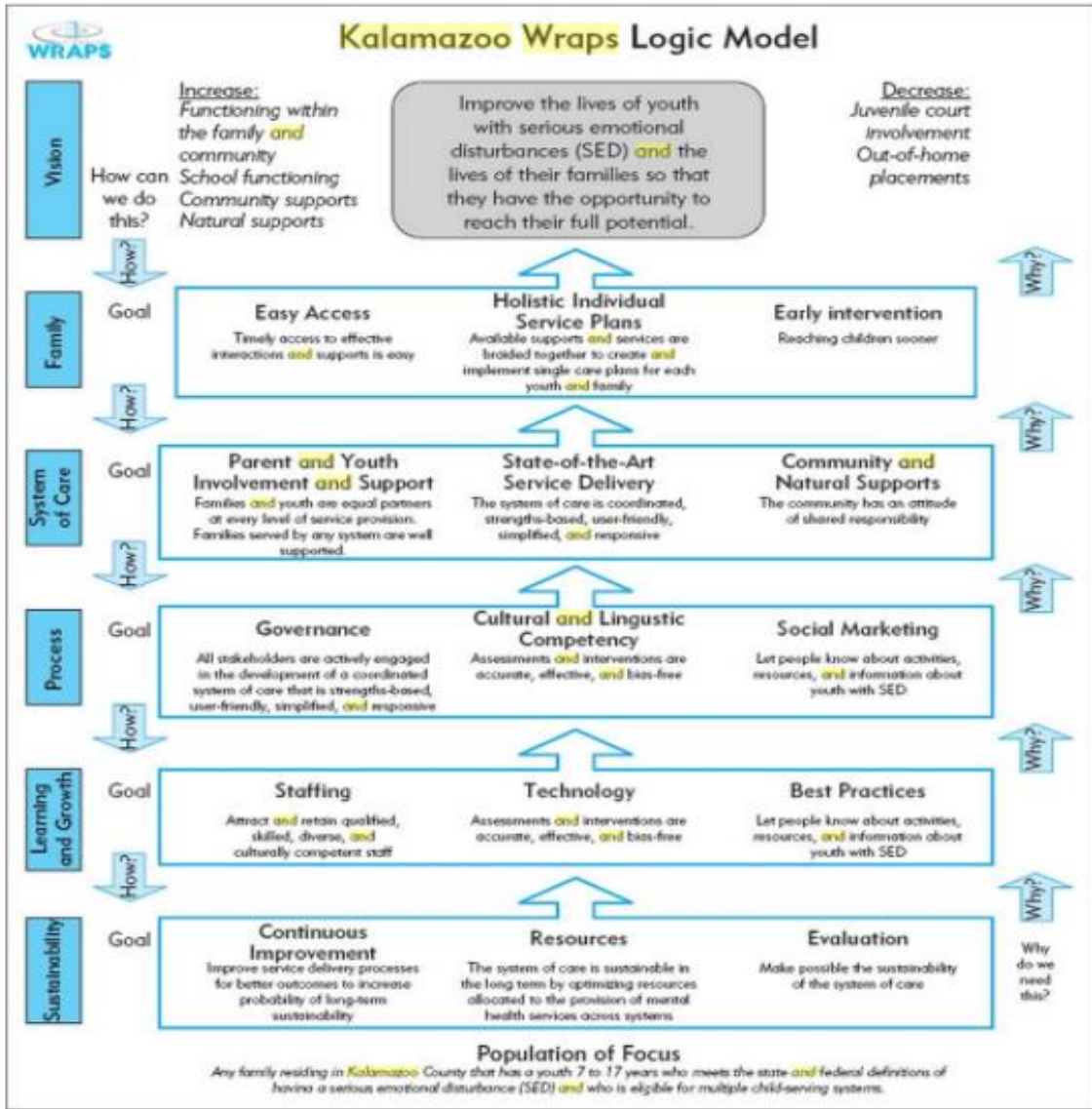
1. The ULN will bring about dramatic improvements in reading comprehension skills for middle school students with disabilities by:
 - + Improving motivation and engagement with reading, and the process of learning to read;
 - + Developing metacognitive skills;
 - + Providing significantly increased opportunities for reading across high-interest environments;
 - + Providing readings that are rich with UDL supports, scaffolds, etc., — readings are effectively "tuned" to students specific strengths and weaknesses;
2. The ULN will be usable in lowest achieving schools;
3. The ULN will be usable and effective across a wide range of student variability, including a range of disabilities as well typically achieving students without identified disabilities;
4. The ULN will be aligned with common core standards, and leverage reciprocal teaching strategies to improve reading comprehension skills.

Universal Literacy Network



Universal Literacy Network
Development

The ULN is essentially a dynamic web of authentic, current, and widely distributed Universally Designed for Learning reading environments, connected by a central Hub. The Hub will provide a homebase or platform on which students can explore the ULN and socially share their experiences in the ULN as their reading skills improve with motivated practice.



Source: From Kalamazoo Wraps (2010)

Sarasota Early Childhood Mental Health Partnership

Embracing family voices,
cultures, strengths &
choices

Prioritizing the
role of
caregivers

Valuing
relationships & a
sense of
belonging

System of Care Values:

- Child centered and family focused, with the needs of the child and family dictating the types and mix of services provided.
- Community based, with the locus of services as well as management and decision making responsibility resting at the community level.
- Culturally Competent, with agencies, programs, and services that are responsive to the cultural, racial and ethnic differences of the populations they serve.

linkage /
connection

Championing
care & safety
for all children

training /
education

feedback /
evaluation

Promoting
awareness
&
acceptance
of mental
health

service expansion
/ enhancement



OSERS NEW FRAMEWORK

Your Turn

- My Rich Uncle

- Courtesy of Gail Barrington

Questions, Comments & Discussion

Contact Information

David Merves MBA, CAS

Williston, VT 05495

(o) 802-857-5935

(c) 802-999-5445

david@eecvt.com

www.eecvt.com